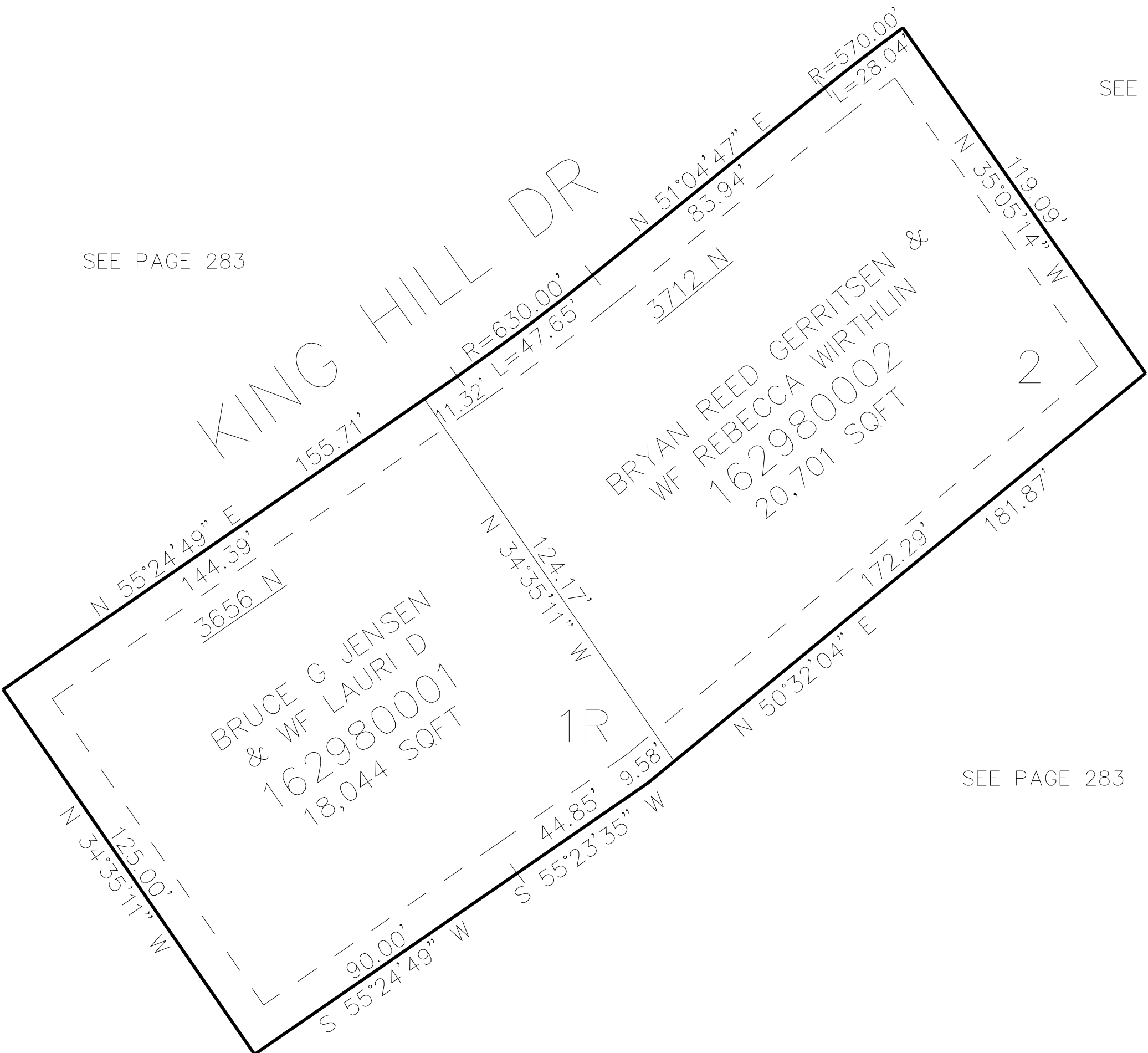


PART OF THE W.1/2, OF SECTION 21, T.7N., R.1W., S.L.B. & M.  
**LOMOND OAKS SUBDIVISION**

298

TAXING UNIT: 10

IN NORTH OGDEN CITY  
SCALE 1" = 30'



10' UTILITY & DRAINAGE EASEMENTS EACH  
SIDE OF PROPERTY LINES AS INDICATED  
BY DASHED LINES EXCEPT AS OTHERWISE  
SHOWN.

FOR COMPLETE ENG DATA SEE  
ORIGINAL DEDICATION PLAT IN  
BOOK 71, PAGE 75 OF RECORDS.